

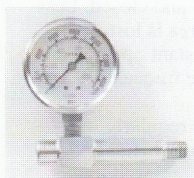
Delta™ 1002-09 and 1602-09

High Pressure Screw-prime Hand Gun

Repair Parts List

Drawing Number	Part Number	Part Description
1.	1002-09	Screw-Prime lubricator w / 10" swivel hose
2.	1602-09	Screw-Prime lubricator w / 16" swivel hose
-	1003-09	Screw-Prime lubricator only
3.	1695-09	Head and handle assembly includes
4.	1696-09	Head only w/ Allen head plug
5.	1502-09	Piston
6.	1681-09	Piston stud nut
7.	1682-09	Piston stud
8.	1683-09	Piston packing
9.	1684-09	Piston packing nut
10.	1686-09	Link (2 required)
11.	1687-09	Link nut (2 required)
12.	1688-09	Link stud (2 required)
13.	1692-09	Piston handle
14.	1690-09	Sealant barrel
15.	1012-09	10" swivel hose assembly
16.	1013-09	16" swivel hose assembly
		<i>Hose assemblies include</i>
17.	1015-09	Giant buttonhead coupler w /adapter 1/8" NPT
18.	1014-09	Adapter, 1/8" NPT
19.	10A5-09	Coupler body
20.	10N5-09	Coupler washer w /"O" ring
21.	10S5-09	Coupler spring
22.	10C5-09	Coupler cap
23.	10G5-09	Coupler cap gasket
24.	1020-09	10" swivel hose only
25.	1021-09	16" swivel hose only
—	1016-09	Std. buttonhead coupler w/adapter 1/8" NPT
		<i>Spring primer assembly includes</i>
26.	1090-09	Bottom collar
27.	1097-09	Screw and handle
28.	1025-09	Primer cup (*)
29.	1023-09	Cup retainer plate (*)
30.	10R3-09	Safety nut
31.	10N3-09	Spring assembly (*includes)
32.	10S3-09	Spring unit only (*)
—	10S4-09	Spring unit only (*)

Optional Delta™ high pressure gauge and adapter



A high pressure, liquid filled gauge with 15,000 p.s.i./kpa dual reading face. Case is stainless steel with male connection. Equipped with heavy-duty glass cover.

It is designed specifically for lubrication equipment. When the lubricant pressure reaches the proper point, the gauge needle will drop, indicating the valve is fully serviced.

It can be used to indicate proper valve adjustment and other valve functions.

Ordering Information

Part Number	Description
1500-09	Delta high pressure gauge and adapter
1501-09	Delta high pressure gauge only

